

KOSTAL^{ize}

your energy



PIKO CI G2 (30/50)

Strong performance for
the commercial sector

KOSTAL – it's a PLUS

The PIKO CI G2 stands for efficient energy conversion, easy commissioning and comprehensive protection – ideal for modern commercial PV systems.

Efficient: Maximum energy yield thanks to high, certified efficiency factor

Safe: Arc detection and integrated surge protection ensure safe operation

Easy: The PIKO CI app enables simple and convenient commissioning on site

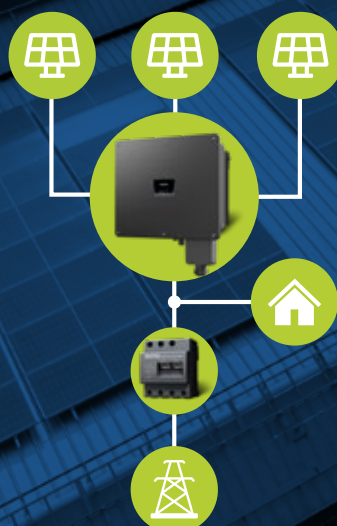
Performance features

Thanks to its high efficiency and integrated communication interfaces, the second generation of the **PIKO CI** is optimally equipped – and its optimised design makes it compact and easy to use.

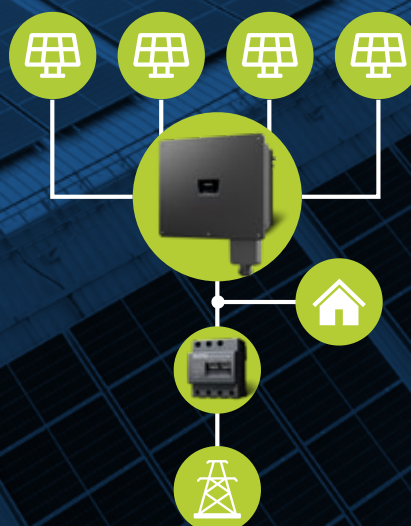
- ✚ IP66-certified housing for water / dust protection for outdoor use
- ✚ Arc detection (AFCI)
- ✚ Cost-optimised 4-wire connection
- ✚ 6 DC inputs with 3 MPP trackers (CI 30)
- ✚ 8 DC inputs with 4 MPP trackers (CI 50)
- ✚ Capable of ripple control thanks to integrated interface
- ✚ Over-assignment of up to 50% DC to AC permits flexible generator design
- ✚ Integrated KOSTAL Smart AC Switch replaces external coupling switch
- ✚ Integrated DC voltage separators
- ✚ Up to 1100 V system voltage for optimum generator design
- ✚ Integrated and replaceable type 2 overvoltage protection (AC / DC)
- ✚ Integrated data logger
- ✚ WiFi interface
- ✚ Bluetooth for commissioning
- ✚ 2-way LAN with integrated switch for easy communication (daisy chain)
- ✚ 2-way RS 485 for simple and direct communication

Versatile and flexible with up to 4 MPP trackers for your commercial system

PIKO CI 30 G2



PIKO CI 50 G2



Technical information

Technical information		PIKO CI G2 (30/50)		
Input (DC)	Power class	kW	3050	
	Max. PV power (cos ϕ = 1)	kWp	4575	
	Start input voltage (U _{DC,Start}) / Max. system voltage (U _{DC,max})	V	200 / 1100	
	Working voltage range (U _{DCworkmin} - U _{DCworkmax})	V	180 - 1000	
	MPP range at rated output (U _{MPP,min} - U _{MPP,max})	V	420-850	500-850
	Number of DC inputs		6	8
	Number of independent MPP trackers		3	4
Output (AC)	Max. apparent output power, cos ϕ _{i,adj}	kVA	33,4	55,6
	Grid connection		3N~, 230/400V, 50 Hz	
	Setting range of the power factor (cos ϕ _{AC,r})		0,8...1...0,8	
System data	Max. efficiency factor	%	98,2	98,2
	Protection class according to EN 60529		IP 66	
	DC/AC overvoltage protection		Type 2 (replaceable)	
	Height (height with AC connection cap)/width/depth	mm	530 (707)/635/224	
	Weight	kg	33,1	44,3
	Ambient temperature	°C	-25...60	
Interfaces	Ethernet LAN TCP/IP (RJ45)		2	
	WiFi		✓	
	RS485		2	
	Digital inputs		4	
	Bluetooth		✓	
Warranty (KOSTAL Smart Warranty ¹⁾)		Years	5	

Subject to technical changes. Errors excepted.

1) KOSTAL Smart Warranty: 5-year warranty period after registration in the KOSTAL Solar Webshop.

Discover the KOSTAL product portfolio and convince yourself of the wide range of applications.

You can find more information at www.kostal-solar-electric.com

